

SESITEK

INDUSTRIAL PERSONAL COMPUTER



BROCHURE

The Professional Partner for Industrial
Computers & Rugged tablet PCs.

PRODUCT CATALOG 2025

Sesitek reserves the right to make changes at any time without notice.
The information contained in this document is subject to periodic review.
The most current revision can be found on the website at www.sesitek.com.



WE ARE SESITEK

An information technology company that offers a wide range of professional computers including handheld and tablet PCs, industrial PCs and vehicular computers designed for different working environments.

OUR IDENTITY

Sesitek SRL is a company founded by an experienced staff who has been involved in industrial computer and automation market for more than 25 years.

The soul of Sesitek is in Italy, the place where ideas take shape and where sales department and customer care are managed.

The office supports european resellers and R&D staff coordination, accounting, product planning, and marketing.

The headquarter is located in Sassuolo, well within an hour's drive from Bologna International Airport and convenient to the high-speed train stations of Modena and Reggio Emilia. Thanks to the logistically advantageous location and the constant availability of products in stock, Sesitek is able to quickly ship to all European countries via express courier.

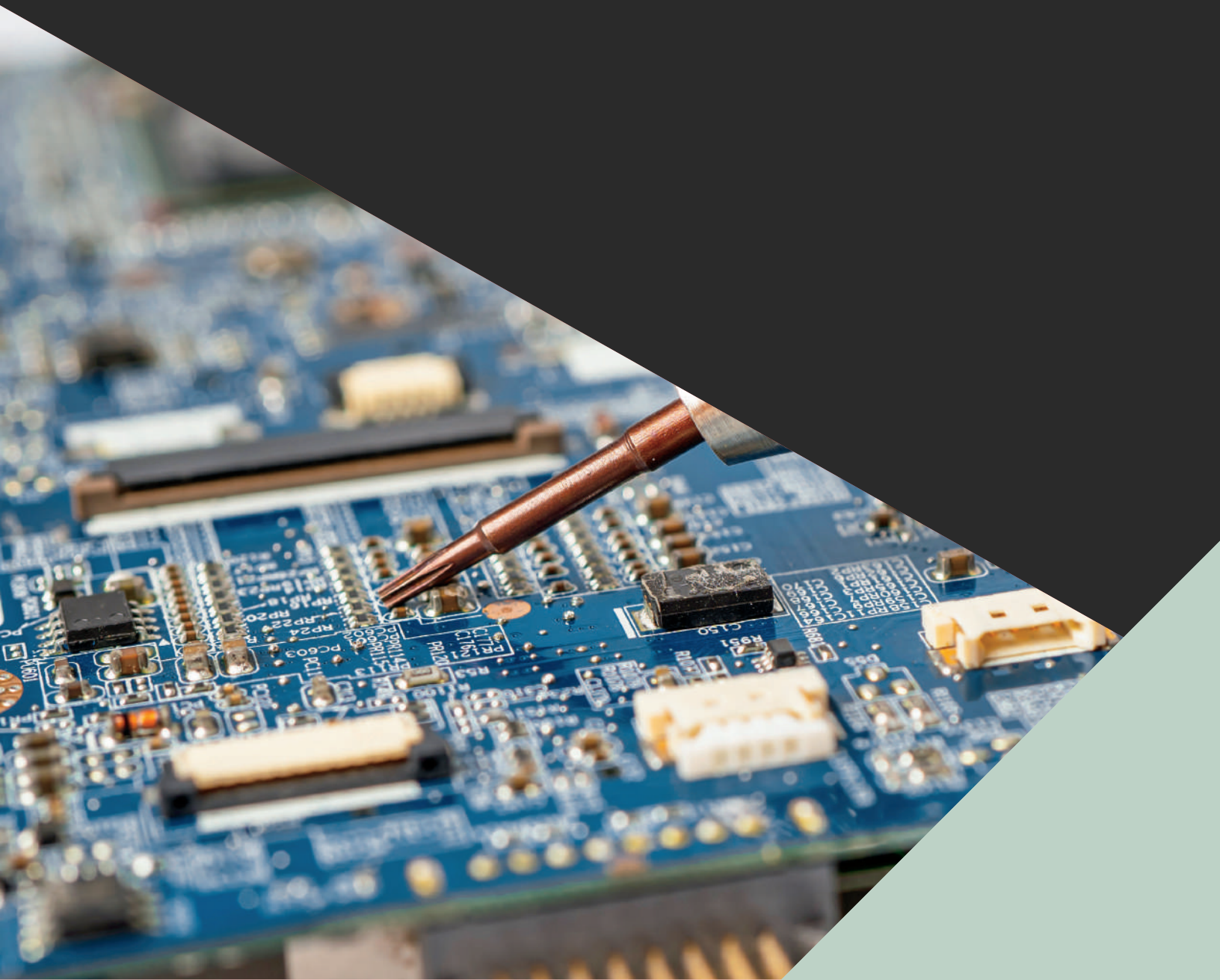
Seriousness and professionalism are the main aspects of our job and customer care is our primary goal. This way of working has enabled us to enter into partnership agreements with prestigious companies that do business in multiple industrial and service sectors.



WHY SESITEK

When you buy a Sesitek device you are assured of getting a rugged, well-made computer capable of running 24/7, 365 days by year.

Each device comes with relevant certifications for the European market, an extendable warranty of up to 5 years with coverage on accidental damages, and a technical customer care to help the user to solve any operational issues throughout the product's life cycle.





INDUSTRIAL PANEL PC

Touch screen PCs rugged suitable for any industrial context.



WATERPROOF



**SUPPORT &
REPAIR SERVICE**



**CUSTOM-MADE
SOLUTION**



**LONG-TERM
SUPPLY**



ZURICH

DISPLAY: From 10" to 21.5"
TOUCHSCREEN: Capacitive multi-touch
CPU: Intel Quad-Core J6412
MEMORY: 8GB/256GB
O.S.: Windows 10/11 o Linux
FEATURES: Compact with Ethernet and WiFi



VERONA

DISPLAY: From 10" to 21.5"
TOUCHSCREEN: Capacitive multi-touch
CPU: Rockchip Quad-Core RK3568
MEMORY: 4GB/64GB
OPERATING SYSTEM: Android 12
FEATURES: Compact with Ethernet and WiFi



ROMA

DISPLAY: From 10" to 21.5"
TOUCHSCREEN: Capacitive multi-touch
CPU: Intel Quad-Core J6412
MEMORY: 8GB/256GB
O.S.: Windows 10/11 o Linux
FEATURES: Panel mounting and VESA



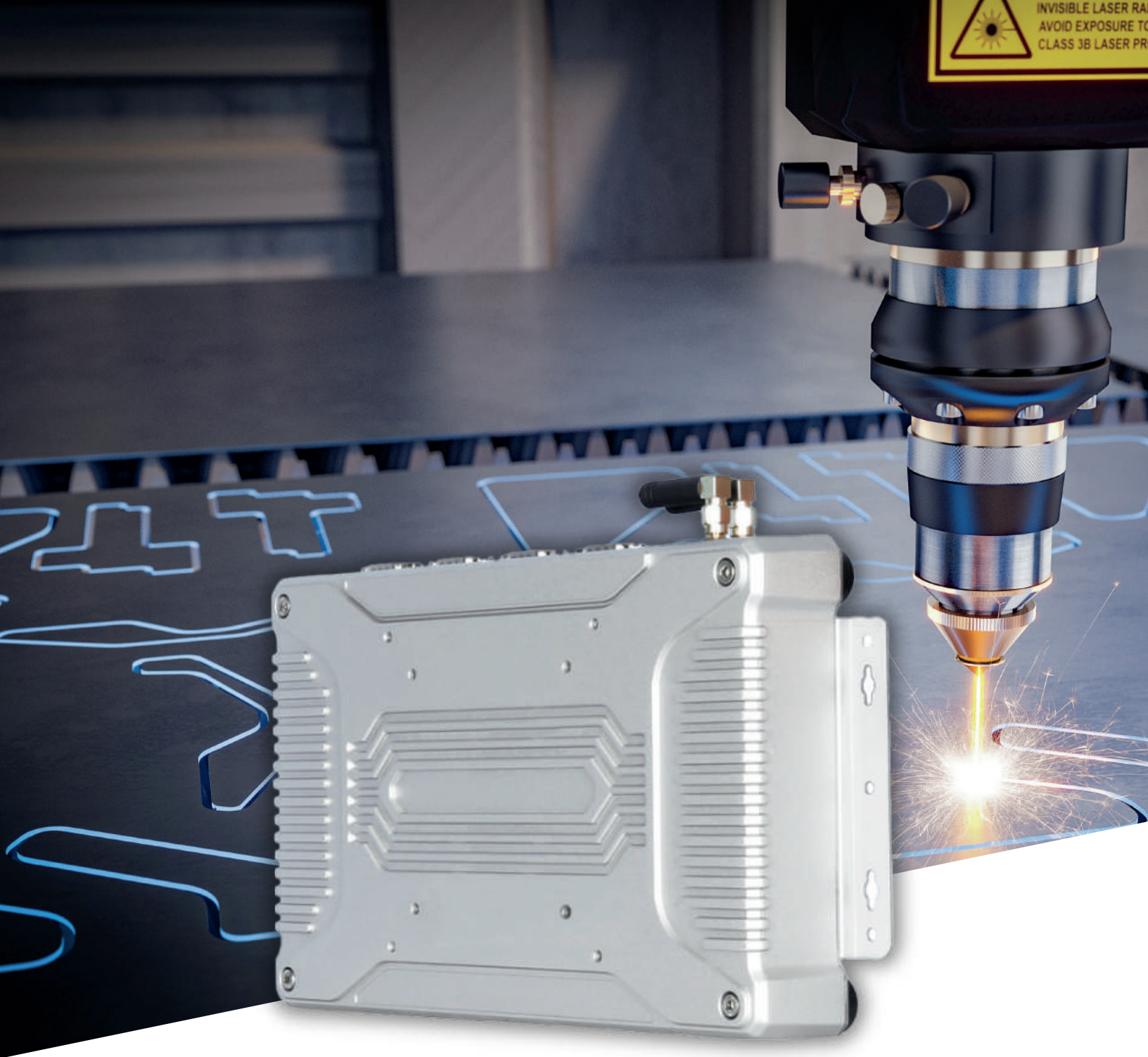
ROMA I5

DISPLAY: From 10" to 21.5"
TOUCHSCREEN: Capacitive multi-touch
CPU: Intel Core i5
MEMORY: 8GB/256GB
O.S.: Windows 10/11 o Linux
FEATURES: High performance



PARIS

DISPLAY: From 10.4" to 17"
TOUCHSCREEN: Resistive touch
CPU: Intel Quad-Core J6412
MEMORY: 8GB/256GB
O.S.: Windows 10/11 o Linux
FEATURES: Touch with industrial gloves



BOX COMPUTER

Box and Rack PCs designed to provide performance and connectivity at maximum levels.



SUPPORT &
REPAIR SERVICE



CUSTOM-MADE
SOLUTION



RELIABILITY



LONG-TERM
SUPPLY



LISBOA

CPU: Intel Quad-Core J6412
MEMORY: 8GB/256GB
O.S.: Windows 10/11 o Linux
FEATURES: Industrial Edge Computer



LISBOA i5

CPU: Intel Core i5
MEMORY: 8GB/256GB
O.S.: Windows 10/11 o Linux
FEATURES: High performance



VENICE

CPU: Rockchip Quad-Core RK3568
MEMORY: 4GB/64GB
OPERATING SYSTEM: Android 12
FEATURES: Compact IoT Gateway



MILANO

CPU: Intel Quad-Core J6412
MEMORY: 8GB/256GB
O.S.: Windows 10/11 o Linux
FEATURES: DIN rail mounting



RACK

CPU: Intel Core i5, i7
MEMORY: 8GB/256GB
OPERATING SYSTEM: Windows 10/11
FEATURES: Rack Mounting 19"



STAINLESS STEEL PC

Computers designed for food and pharmaceutical industries.



WATERPROOF



**DUST
RESISTANCE**



**LONG-TERM
SUPPLY**



RELIABILITY



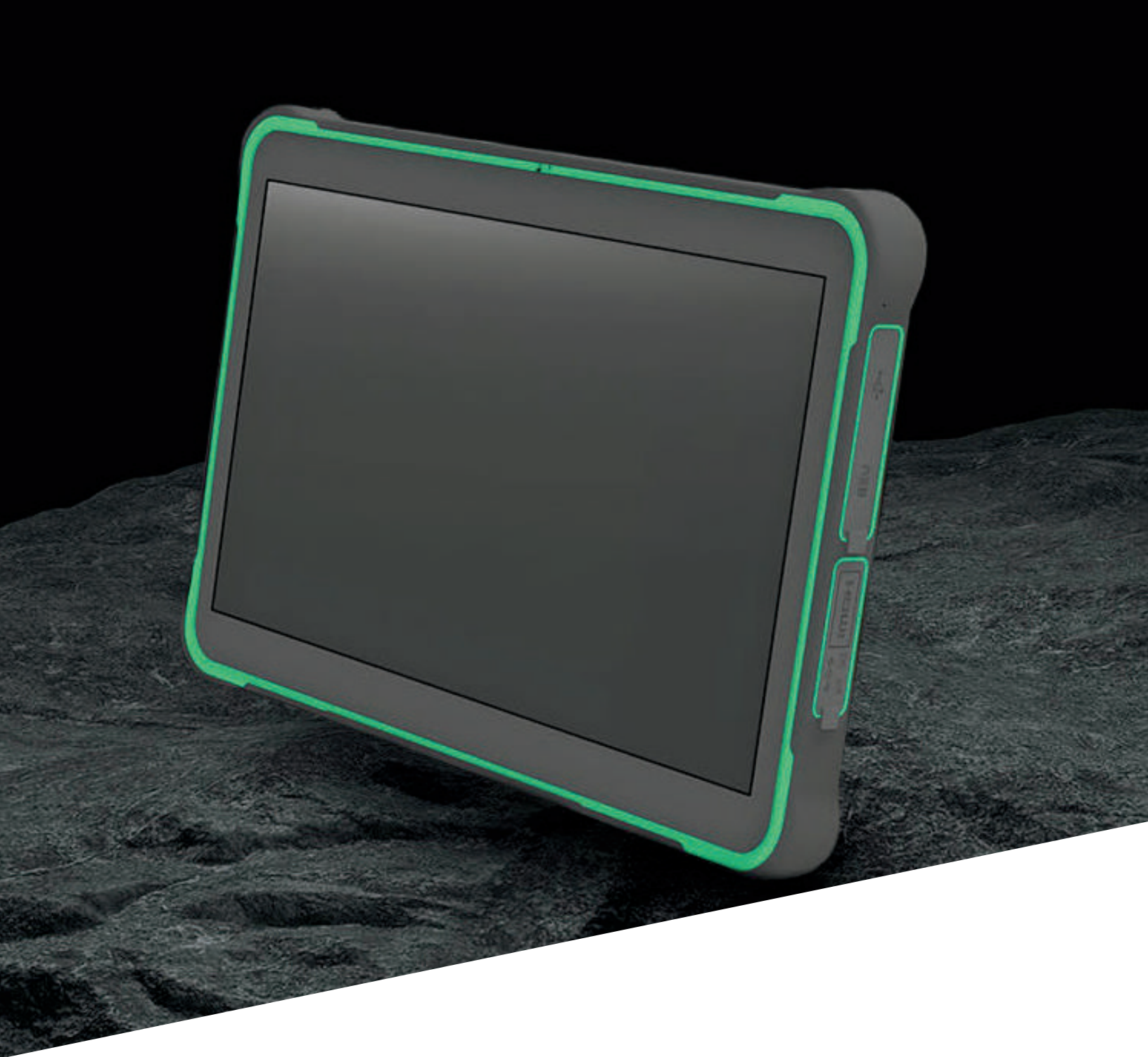
MODENA

DISPLAY: 17" resolution 1280 x 1024
TOUCHSCREEN: Resistive touch
CPU: Intel Quad-Core J6412
MEMORY: 8GB/256GB
O.S.: Windows 10/11 o Linux
FEATURES: Stainless steel AISI 304



MUNICH

DISPLAY: 15.6" and 21.5" Wide
TOUCHSCREEN: Capacitive multi-touch
CPU: Intel Quad-Core J6412
MEMORY: 8GB/256GB
O.S.: Windows 10/11 o Linux
FEATURES: Stainless steel AISI 304



TAILOR-MADE COMPUTER

Thanks to the dynamism of its technical staff and its excellent know-how, Sesitek is able to offer customized computers in a very short time with competitive prices, thus minimizing the time between idea and product.

TAILOR-MADE COMPUTER

Customization services include either partial modification or addition of special functions based on Sesitek's standard products, or the design and implementation of a custom product with specific electronics performances, I/O interfaces, mold customization for color and shape, and so on.





RUGGED INDUSTRIAL TABLETS

A reliable and durable device that can withstand in any climatic and environmental situation.



WATERPROOF



**CUSTOM-MADE
SOLUTION**



**RUGGED &
SHOCKPROOF**



**LONG-TERM
SUPPLY**

TABLET WINDOWS



13" 

RT 413

DISPLAY: 13.3" resolution 1920 x 1080
TOUCHSCREEN: Capacitive multi-touch
CPU: Intel Quad-Core N5100
MEMORY: 8GB/256GB
OPERATING SYSTEM: Windows 10/11
FEATURES: Big screen size



13"  

RT 613

DISPLAY: 13.3" resolution 1920 x 1080
TOUCHSCREEN: Capacitive multi-touch
CPU: Intel Core i5-1235U
MEMORY: 8GB/256GB
OPERATING SYSTEM: Windows 10/11
FEATURES: High performance



12"  

RT 252

DISPLAY: 12.2" resolution 1920 x 1200
TOUCHSCREEN: Capacitive multi-touch
CPU: Intel Core i5-1235U
MEMORY: 16GB/128GB
OPERATING SYSTEM: Windows 10/11
FEATURES: High performance



12" 

RT 412

DISPLAY: 12.2" resolution 1920 x 1200
TOUCHSCREEN: Capacitive multi-touch
CPU: Intel Quad-Core N5100
MEMORY: 8GB/128GB
OPERATING SYSTEM: Windows 10/11
FEATURES: Big screen size



10"  

RT 510

DISPLAY: 10.1" resolution 1920 x 1200
TOUCHSCREEN: Capacitive multi-touch
CPU: Intel Core i5-8200Y
MEMORY: 8GB/256GB
OPERATING SYSTEM: Windows 10/11
FEATURES: High performance



10"  

RT 610

DISPLAY: 10.1" resolution 1920 x 1200
TOUCHSCREEN: Capacitive multi-touch
CPU: Intel Core i5-1235U
MEMORY: 8GB/256GB
OPERATING SYSTEM: Windows 10/11
FEATURES: High performance



RT 310

DISPLAY: 10.1" resolution 1920 x 1200
TOUCHSCREEN: Capacitive multi-touch
CPU: Intel Quad-Core Z8350
MEMORY: 4GB/64GB
OPERATING SYSTEM: Windows 10
FEATURES: Touch with industrial gloves



RT 410

DISPLAY: 10.1" resolution 1920 x 1200
TOUCHSCREEN: Capacitive multi-touch
CPU: Intel Quad-Core N5100
MEMORY: 8GB/256GB
OPERATING SYSTEM: Windows 10/11
FEATURES: Touch with industrial gloves



RT 509

DISPLAY: 8.1" resolution 1920 x 1200
TOUCHSCREEN: Capacitive multi-touch
CPU: Intel Core i5-8200Y
MEMORY: 8GB/256GB
OPERATING SYSTEM: Windows 10/11
FEATURES: High performance



RT 409

DISPLAY: 8.1" resolution 1920 x 1200
TOUCHSCREEN: Capacitive multi-touch
CPU: Intel Quad-Core N5100
MEMORY: 8GB/256GB
OPERATING SYSTEM: Windows 10/11
FEATURES: Touch with industrial gloves



RT 309

DISPLAY: 8.1" resolution 1920 x 1200
TOUCHSCREEN: Capacitive multi-touch
CPU: Intel Quad-Core Z8350
MEMORY: 4GB/64GB
OPERATING SYSTEM: Windows 10
FEATURES: Touch with industrial gloves

TABLET LINUX



RTL 252

DISPLAY: 12.2" resolution 1920 x 1200
TOUCHSCREEN: Capacitive multi-touch
CPU: Intel Core i5-1235U
MEMORY: 16GB/128GB
OPERATING SYSTEM: Ubuntu 22 LTS
FEATURES: High performance



RTL 412

DISPLAY: 12.2" resolution 1920 x 1200
TOUCHSCREEN: Capacitive multi-touch
CPU: Intel Quad-Core N5100
MEMORY: 8GB/128GB
OPERATING SYSTEM: Ubuntu 22 LTS
FEATURES: Big screen size



RTL 410

DISPLAY: 10.1" resolution 1920 x 1200
TOUCHSCREEN: Capacitive multi-touch
CPU: Intel Quad-Core N5100
MEMORY: 8GB/256GB
OPERATING SYSTEM: Ubuntu 22 LTS
FEATURES: Touch with industrial gloves



RTL 510

DISPLAY: 10.1" resolution 1920 x 1200
TOUCHSCREEN: Capacitive multi-touch
CPU: Intel Core i5-8200Y
MEMORY: 8GB/256GB
OPERATING SYSTEM: Ubuntu 22 LTS
FEATURES: High performance



RTL 509

DISPLAY: 8.1" resolution 1920 x 1200
TOUCHSCREEN: Capacitive multi-touch
CPU: Intel Core i5-8200Y
MEMORY: 8GB/256GB
OPERATING SYSTEM: Ubuntu 22 LTS
FEATURES: High performance



RTL 409

DISPLAY: 8.1" resolution 1920 x 1200
TOUCHSCREEN: Capacitive multi-touch
CPU: Intel Quad-Core N5100
MEMORY: 8GB/256GB
OPERATING SYSTEM: Ubuntu 22 LTD
FEATURES: Touch with industrial gloves

TABLET ANDROID



RTA 112

DISPLAY: 12.2" resolution 1920 x 1200
TOUCHSCREEN: Capacitive multi-touch
CPU: Qualcomm Octa-Core
MEMORY: 8GB/128GB
OPERATING SYSTEM: Android 11
FEATURES: Big screen size



RTA 310

DISPLAY: 10.1" resolution 1920 x 1200
TOUCHSCREEN: Capacitive multi-touch
CPU: MediaTek Octa-Core
MEMORY: 4GB/64GB o superiore
OPERATING SYSTEM: Android 11
FEATURES: Touch with industrial gloves



RTA 309

DISPLAY: 8.1" resolution 1920 x 1200
TOUCHSCREEN: Capacitive multi-touch
CPU: MediaTek Octa-Core
MEMORY: 4GB/64GB o superiore
OPERATING SYSTEM: Android 11
FEATURES: Touch with industrial gloves



Saturday, Mar 12

RUGGTEK



HIGH BRIGHTNESS TABLETS

High-brightness, sunlight readable tablets for outdoor industrial applications.



WATERPROOF



**SUNLIGHT
READABLE**



**RUGGED &
SHOCKPROOF**



**WARRANTY
UP TO 5 YEARS**

TABLET WINDOWS



RT 510-HB

DISPLAY: 10.1" resolution 1920 x 1200
TOUCHSCREEN: Capacitive multi-touch
CPU: Intel Core i5-8200Y
MEMORY: 8GB/256GB
OPERATING SYSTEM: Windows 10/11
FEATURES: High performance



RT 410-HB

DISPLAY: 10.1" resolution 1920 x 1200
TOUCHSCREEN: Capacitive multi-touch
CPU: Intel Quad-Core N5100
MEMORY: 8GB/256GB
OPERATING SYSTEM: Windows 10/11
FEATURES: High-brightness display



RT 509-HB

DISPLAY: 8.1" resolution 1920 x 1200
TOUCHSCREEN: Capacitive multi-touch
CPU: Intel Core i5-8200Y
MEMORY: 8GB/256GB
OPERATING SYSTEM: Windows 10/11
FEATURES: High performance



RT 409-HB

DISPLAY: 8.1" resolution 1920 x 1200
TOUCHSCREEN: Capacitive multi-touch
CPU: Intel Quad-Core N5100
MEMORY: 8GB/256GB
OPERATING SYSTEM: Windows 10/11
FEATURES: High-brightness display

TABLET LINUX



RTL 410-HB

DISPLAY: 10.1" resolution 1920 x 1200
TOUCHSCREEN: Capacitive multi-touch
CPU: Intel Quad-Core N5100
MEMORY: 8GB/256GB
OPERATING SYSTEM: Ubuntu 22 LTS
FEATURES: High-brightness display



RTL 510-HB

DISPLAY: 10.1" resolution 1920 x 1200
TOUCHSCREEN: Capacitive multi-touch
CPU: Intel Core i5-8200Y
MEMORY: 8GB/256GB
OPERATING SYSTEM: Ubuntu 22 LTS
FEATURES: High performance



RTL 509-HB

DISPLAY: 8.1" resolution 1920 x 1200
TOUCHSCREEN: Capacitive multi-touch
CPU: Intel Core i5-8200Y
MEMORY: 8GB/256GB
OPERATING SYSTEM: Ubuntu 22 LTS
FEATURES: High performance



RTL 409-HB

DISPLAY: 8.1" resolution 1920 x 1200
TOUCHSCREEN: Capacitive multi-touch
CPU: Intel Quad-Core N5100
MEMORY: 8GB/256GB
OPERATING SYSTEM: Ubuntu 22 LTS
FEATURES: High-brightness display

TABLET ANDROID

10 POLLICI



RTA 310-HB

DISPLAY: 10.1" resolution 1920 x 1200
TOUCHSCREEN: Capacitive multi-touch
CPU: MediaTek Octa-Core
MEMORY: 4GB/64GB o superiore
OPERATING SYSTEM: Android 11
FEATURES: High-brightness display



RTA 309-HB

DISPLAY: 8.1" resolution 1920 x 1200
TOUCHSCREEN: Capacitive multi-touch
CPU: MediaTek Octa-Core
MEMORY: 6GB/64GB
OPERATING SYSTEM: Android 11
FEATURES: High-brightness display



INDUSTRIAL HANDHELDS

Smart terminals with barcode reader and a long-life battery for extended use during the working day.



WATERPROOF



RELIABILITY



RUGGED &
SHOCKPROOF



LONG LIFE
BATTERY

WINDOWS HANDHELDS



6.5" 

RP 610

DISPLAY: 6.5" resolution 720x1600
TOUCHSCREEN: Capacitive multi-touch
CPU: Intel Quad-Core N5100
MEMORY: 8GB/128GB
OPERATING SYSTEM: Windows 10/11
FEATURES: Barcode reader included



5.5" 

RP 550

DISPLAY: 5.5" resolution 1080 x 1920
TOUCHSCREEN: Capacitive multi-touch
CPU: Intel Quad-Core Z8350
MEMORY: 4GB/64GB
OPERATING SYSTEM: Windows 10
FEATURES: Barcode reader included

PALMARI LINUX



5.5" 

RPL 550

DISPLAY: 5.5" resolution 1080 x 1920
TOUCHSCREEN: Capacitive multi-touch
CPU: Intel Quad-Core
MEMORY: 4GB/64GB
OPERATING SYSTEM: Ubuntu 22 LTS
FEATURES: Barcode reader included



6.5" 

RPL 610

DISPLAY: 6.5" resolution 720x1600
TOUCHSCREEN: Capacitive multi-touch
CPU: Intel Quad-Core N5100
MEMORY: 8GB/128GB
OPERATING SYSTEM: Ubuntu 22 LTS
FEATURES: Barcode reader included

PALMARI ANDROID



RPC 620

DISPLAY: 5.5" resolution 720 x 1440
TOUCHSCREEN: Capacitive multi-touch
CPU: MediaTek Octa-Core
MEMORY: 4GB/64GB
OPERATING SYSTEM: Android 13
FEATURES: UHF reader included



RPC 610

DISPLAY: 5.5" resolution 720 x 1440
TOUCHSCREEN: Capacitive multi-touch
CPU: MediaTek Octa-Core
MEMORY: 4GB/64GB
OPERATING SYSTEM: Android 13
FEATURES: UHF and pistol grip



RPC 600

DISPLAY: 5.5" resolution 720 x 1440
TOUCHSCREEN: Capacitive multi-touch
CPU: MediaTek Octa-Core
MEMORY: 4GB/64GB
OPERATING SYSTEM: Android 13
FEATURES: Barcode reader included





RUGGED SMARTPHONE

Essential for professionals and workers who operate in harsh environments, offering durability and waterproofing.



WATERPROOF



RELIABILITY




RUGGED & SHOCKPROOF



LONG LIFE BATTERY

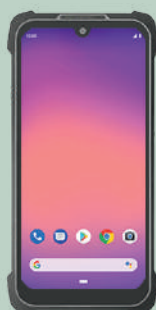
SMARTPHONE ANDROID



6.2" 

RSM 010

DISPLAY: 6.23" resolution 1080 x 2280
TOUCHSCREEN: Capacitive multi-touch
CPU: MediaTek Octa-Core
MEMORY: 6GB/128GB
OPERATING SYSTEM: Android 14
FEATURES: High performance




5.5" 

RST 220

DISPLAY: 5.5" resolution 720 x 1440
TOUCHSCREEN: Capacitive multi-touch
CPU: MediaTek Octa-Core
MEMORY: 4GB/64GB
OPERATING SYSTEM: Android 11
FEATURES: Excellent value for money



5.5" 

PST 220

DISPLAY: 5.5" resolution 720 x 1440
TOUCHSCREEN: Capacitive multi-touch
CPU: MediaTek Octa-Core
MEMORY: 4GB/64GB
OPERATING SYSTEM: Android 11
FEATURES: Barcode reader included



PROFESSIONAL TABLETS & PDAs

Perfect for professional users who need a lightweight and handy device, for use in the store or warehouse.



SUPPORT &
REPAIR SERVICE



RELIABILITY



WARRANTY
UP TO 5 YEARS



LONG LIFE
BATTERY

TABLET



RT 308

DISPLAY: 8.1" resolution 1920 x 1200
TOUCHSCREEN: Capacitive multi-touch
CPU: Intel Quad-Core Z8350
MEMORY: 4GB/64GB
OPERATING SYSTEM: Windows 10
FEATURES: Barcode reader included



RTA 308

DISPLAY: 8.1" resolution 1920 x 1200
TOUCHSCREEN: Capacitive multi-touch
CPU: MediaTek Octa-Core
MEMORY: 4GB/64GB
OPERATING SYSTEM: Android 11
FEATURES: Barcode reader included

PDAs



PST 220

DISPLAY: 5.5" resolution 720 x 1440
TOUCHSCREEN: Capacitive multi-touch
CPU: MediaTek Octa-Core
MEMORY: 4GB/64GB
OPERATING SYSTEM: Android 11
FEATURES: Barcode reader included



RPX 620

DISPLAY: 5.5" resolution 720 x 1440
TOUCHSCREEN: Capacitive multi-touch
CPU: MediaTek Octa-Core
MEMORY: 4GB/64GB
OPERATING SYSTEM: Android 10
FEATURES: UHF reader included



RPX 600

DISPLAY: 5.5" resolution 720 x 1440
TOUCHSCREEN: Capacitive multi-touch
CPU: MediaTek Octa-Core
MEMORY: 4GB/64GB
OPERATING SYSTEM: Android 10
FEATURES: Barcode reader included



VEHICULAR TABLETS

The most suitable solution for vehiculars: forklifts, trucks, earth moving vehicles, agriculture.



SUPPORT &
REPAIR SERVICE



DUST
RESISTANCE



WARRANTY
UP TO 5 YEARS



LONG-TERM
SUPPLY

TABLET WINDOWS



RV 110

DISPLAY: 10.1" resolution 1280 x 800
TOUCHSCREEN: Capacitive multi-touch
CPU: Intel Quad-Core N5100
MEMORY: 4GB/64GB
OPERATING SYSTEM: Windows 10/11
FEATURES: Power supply by vehicle



RV 180

DISPLAY: 8.1" resolution 1280 x 800
TOUCHSCREEN: Capacitive multi-touch
CPU: Intel Quad-Core N5100
MEMORY: 4GB/64GB
OPERATING SYSTEM: Windows 10/11
FEATURES: Power supply by vehicle

TABLET LINUX



RVL 110

DISPLAY: 10.1" resolution 1280 x 800
TOUCHSCREEN: Capacitive multi-touch
CPU: Intel Quad-Core N5100
MEMORY: 4GB/64GB
OPERATING SYSTEM: Ubuntu 22 LTS
FEATURES: Power supply by vehicle



RVL 180

DISPLAY: 8.1" resolution 1280 x 800
TOUCHSCREEN: Capacitive multi-touch
CPU: Intel Quad-Core N5100
MEMORY: 4GB/64GB
OPERATING SYSTEM: Ubuntu 22 LTS
FEATURES: Power supply by vehicle

TABLET ANDROID



RVA 110

DISPLAY: 10.1" resolution 1280 x 800
TOUCHSCREEN: Capacitive multi-touch
CPU: MediaTek Octa-Core
MEMORY: 4GB/64GB
OPERATING SYSTEM: Android 12
FEATURES: Power supply by vehicle



RVA 180

DISPLAY: 8.1" resolution 1280 x 800
TOUCHSCREEN: Capacitive multi-touch
CPU: MediaTek Octa-Core
MEMORY: 4GB/64GB
OPERATING SYSTEM: Android 12
FEATURES: Power supply by vehicle





INDUSTRIAL NOTEBOOKS

Rugged industrial laptops are designed for mobility on the job, offering maximum ruggedness in the harshest environments.



DUST
RESISTANCE



RUGGED &
SHOCKPROOF



WARRANTY
UP TO 5 YEARS



LONG LIFE
BATTERY

NOTEBOOK WINDOWS



RT 412-KB

DISPLAY: 12.2" resolution 1920 x 1200
TOUCHSCREEN: Capacitive multi-touch
CPU: Intel Quad-Core N5100
MEMORY: 8GB/128GB
OPERATING SYSTEM: Windows 10/11
FEATURES: Detachable keyboard



RLX 015

DISPLAY: 15.6" resolution 1920 x 1080
CPU: Intel Core i5-1135G7
MEMORY: 16GB/256GB
OPERATING SYSTEM: Windows 10/11
NETWORKING: RJ45, WiFi, Bluetooth, 4G/5G
FEATURES: Hot-swappable battery

NOTEBOOK LINUX



RTL 412-KB

DISPLAY: 12.2" resolution 1920 x 1200
TOUCHSCREEN: Capacitive multi-touch
CPU: Intel Quad-Core N5100
MEMORY: 8GB/128GB
OPERATING SYSTEM: Ubuntu 22 LT
FEATURES: Detachable keyboard

NOTEBOOK ANDROID



RTA 112-KB

DISPLAY: 12.2" resolution 1920 x 1200
TOUCHSCREEN: Capacitive multi-touch
CPU: Qualcomm Octa-Core
MEMORY: 8GB/128GB
OPERATING SYSTEM: Android 11
FEATURES: Detachable keyboard

www.sesitek.com
www.ruggtek.com

SESITEK

INDUSTRIAL PERSONAL COMPUTER

Via Regina Pacis 74c, Zipcode 41049 Sassuolo (Modena), Italy
Phone: +39 0536 582 115 - Email: info@sesitek.com